



WARDROBE checklist

UNDERGARMENTS

- Bras
- Seamless underwear
- Shine appliances & sink
- Shapewear (if needed)

T-SHIRTS

- Novelty / Band / Solid
- Workout / Exercise

BLOUSES

- Long Sleeve
- 3/4 Sleeve
- Elbow Length
- Short Sleeve
- Cap Sleeve
- Sleeveless

JACKETS

- Blazers
- Denim Jacket
- Lightweight Leather Jacket

SWEATERS

- All Sleeve Lengths
- Pullovers
- Cardigans
- Sweatshirts
- Turtlenecks

BODYSUITS

- All Sleeve Lengths
- Black
- White
- Nude

CAMISOLES

- Black
- White
- Nude

HOLLY KATZ
styling

HOLLY KATZ

styling

JEANS

- Black
- Colored
- Denim (light and dark)

OUTERWEAR

- Puffer Jacket
- Dress Coat
- Trench Coat

SKIRTS

- Maxi
- Midi
- Mini

DRESSES

- Summer
- Fall
- Winter
- Sweater Dresses
- Work Dresses
- Dressier, Nighttime, Date Night, etc.
- Formal, Black Tie

SHOES

- Rec Sneakers
- Workout sneakers
- Flats (ballet or loafers)
- Boots (cowboy, flat, heeled)
- Sandals: Flat, heeled, wedge, stiletto
- Pumps: Black, neutral, metallic

BAGS

- Work tote
- Medium everyday bag
- Clutch for night time
- Wallet on chain

SHORTS

- Denim
- Black
- Colored

ACCESSORIES

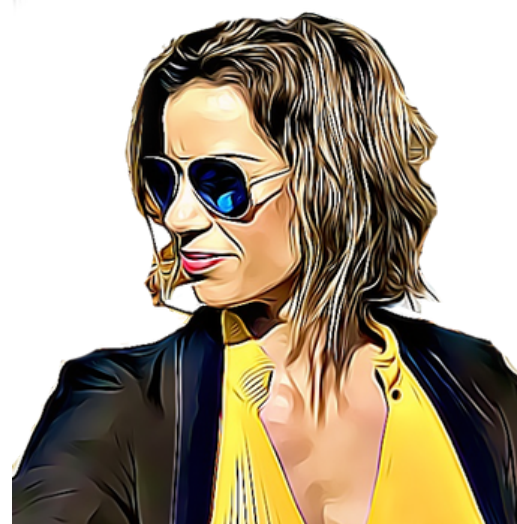
- Belts: Skinny and Wide
- Scarves

SLACKS

- Colored
- Neutral
- Black

LEGGINGS

- Faux Leather Black
- Faux Leather Color or Pattern



Contact Holly:

holly@hollykatzstyling.com

www.hollykatzstyling.com

@hollykatzstyling in IG and FB

Follow the Podcast!

FASHION CRIMES PODCAST

www.FashionCrimesPodcast.com